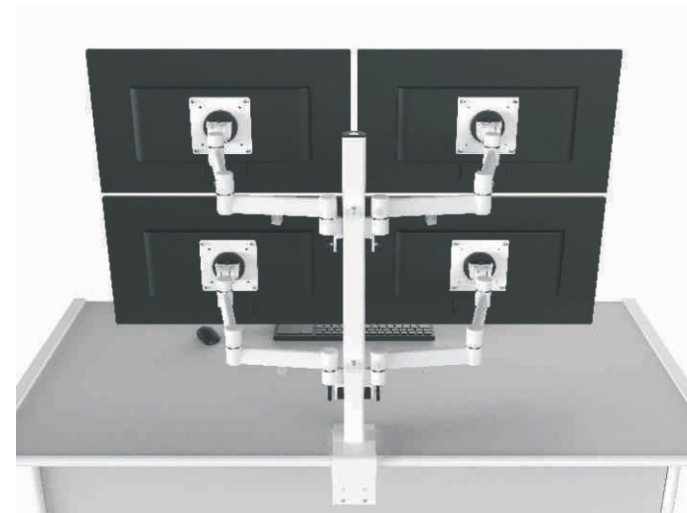
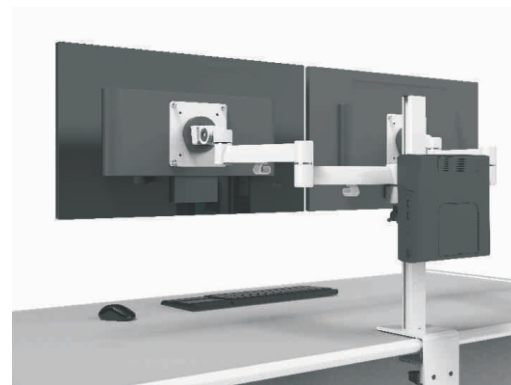


Triple Screen



Quad Screen



Thin Client Solution



Dual Screen



Dynamic Dual with Post

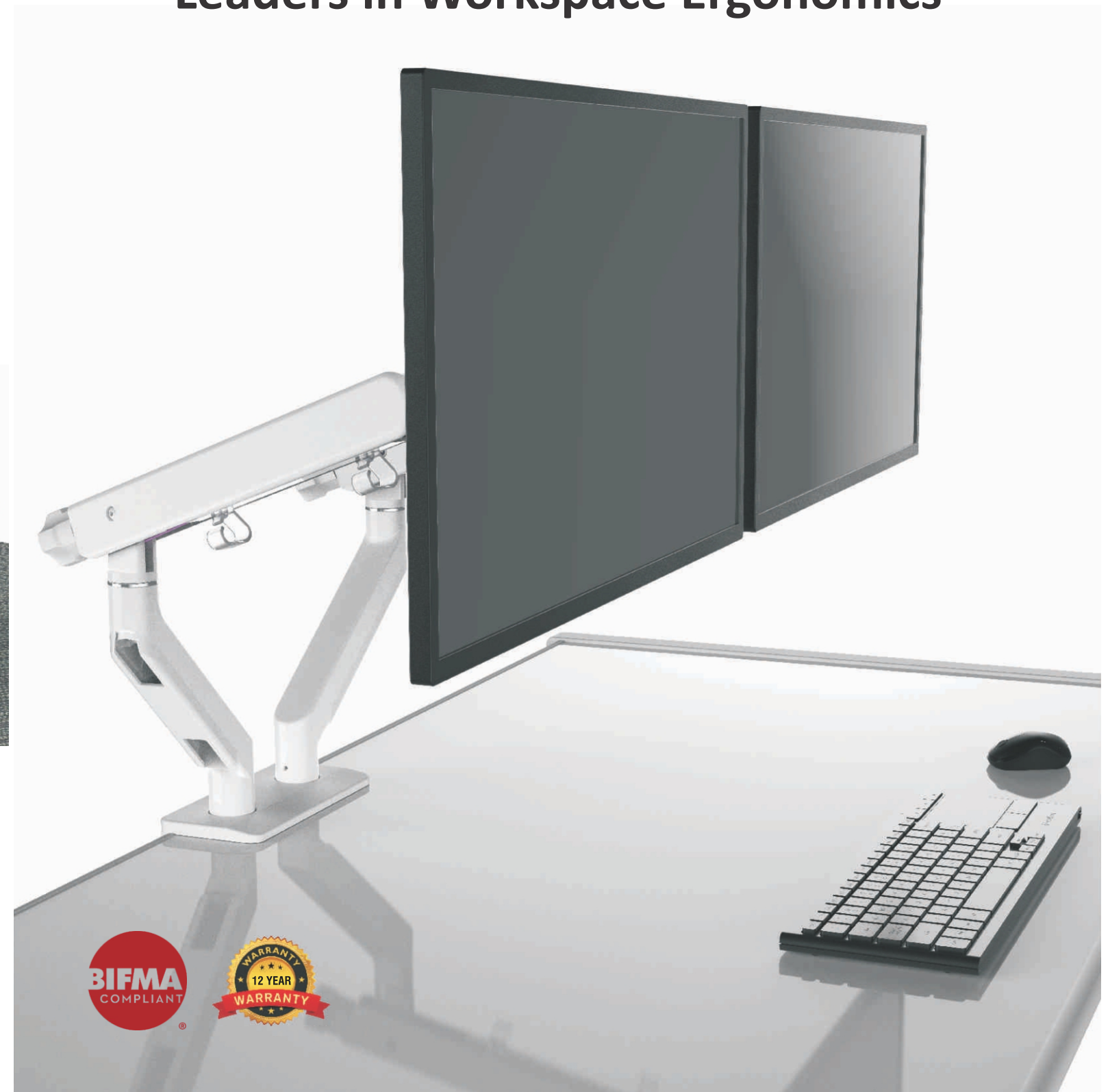


Control Room Solution

Veida®

Office Ergonomics & Productivity Solutions

Leaders in Workspace Ergonomics



Order to :

Pravergo Industries Pvt Ltd.,
Hosur, India.

✉ info@veidainternational.com

Traniti Limited
Auckland New Zealand

✉ info@traniti.co.nz

Veida®

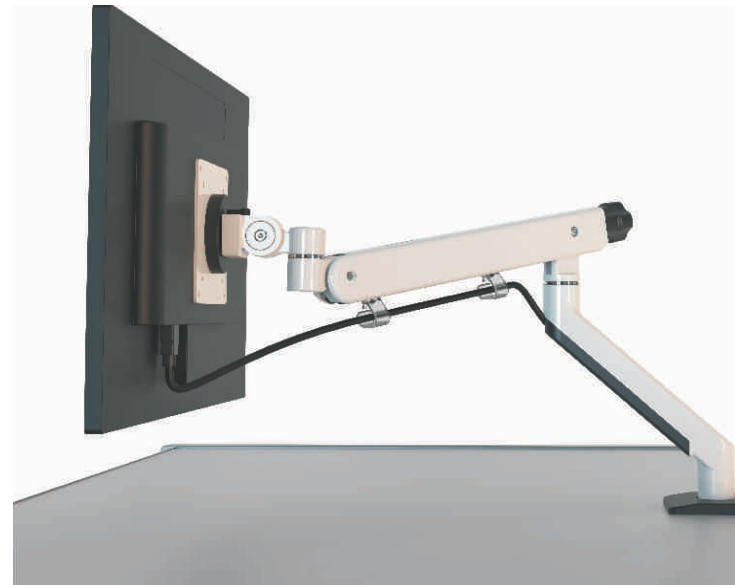
<https://veidainternational.com>

Sales and Marketing :

Raj Sirungattur
Dynamic Office Solutions NZ Ltd.,
Email : raj@dynamicssolution.co.nz
Ph : +64275521212

Veida® Dynamic Series

Veida Dynamic Series Monitor Mounts are thoughtfully designed prioritizing ergonomics, health & wellbeing and productivity improvement as primary objectives.



Single Screen



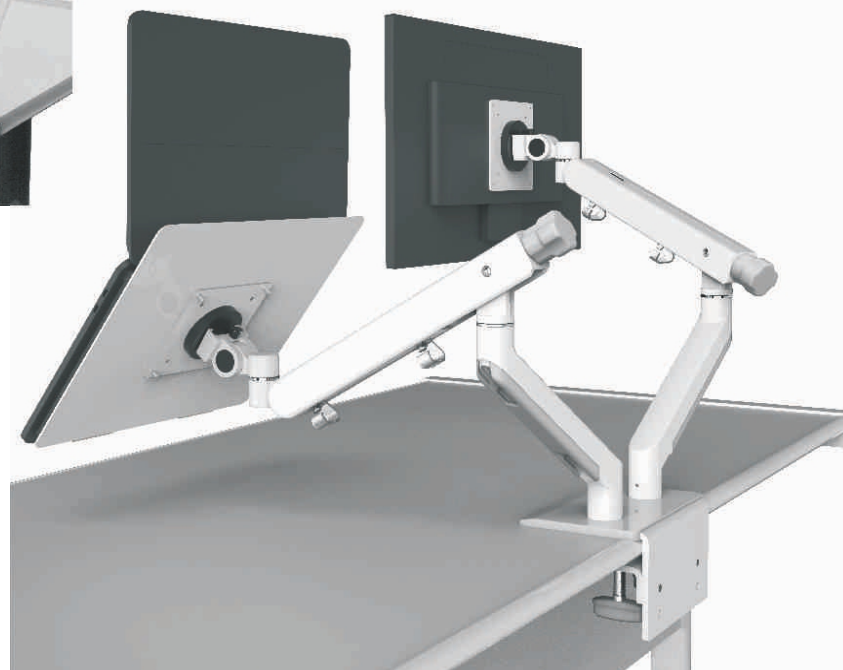
Dual Screen

Specifications:-

- ✓ Monitor Weight Range - 2 to 13 Kgs.
- ✓ Max Reach - 570 mm
- ✓ Max Height - 465 mm
- ✓ Height Adjustment - 306 mm
- ✓ Vesa Rotation - 360°
- ✓ Vesa Tilt - +100° / -70°
- ✓ Vesa Complaint - 75 x 75 & 100 x 100

Features:-

- ✓ Veida Dynamic Series mounts revolutionary compression spring & cradle technology enables smooth & effortless screen height adjustments.
- ✓ A clearly visible indicator and counter balance adjustment using ergonomically designed knob let the user to set the tension for varying screen weight without the need of any tool.
- ✓ Innovative and integrated cable management system allows neat and cluttered free installation.
- ✓ The smooth and effortless dynamic movements allow user to position the screen to the optimum level which reduces greatly neck, eye & back strains.
- ✓ Smooth fingertip screen tilting functions reduces grains to reduce eye fatigue.
- ✓ Clamping options - It comes with edge desk clamp and the desk grommet mounting solutions.
- ✓ Quick Release Vesa.
- ✓ Our movements are limited +/- 90° to avoid any damage to partition or wall . However by unlocking this feature arms can be rotated +/- 180°.
- ✓ Available in White, Silver & Black Colour.



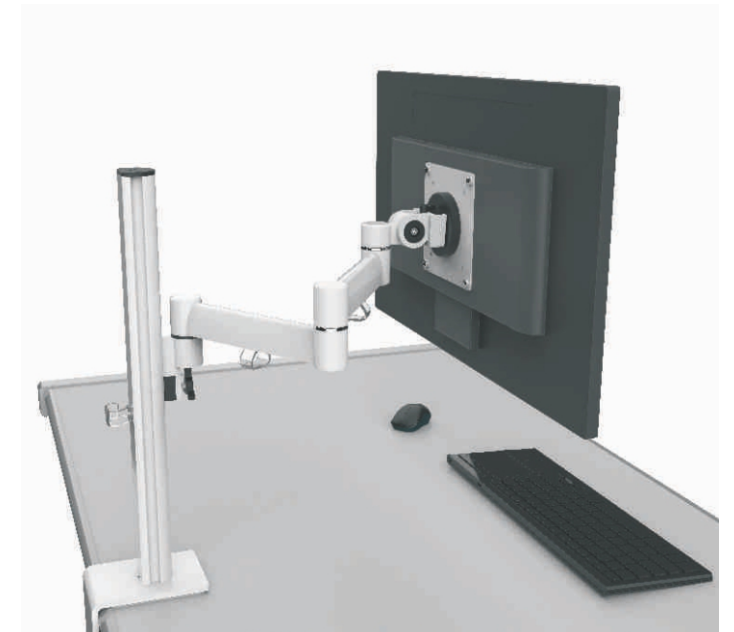
Laptop Solution

Veida® Classic Series

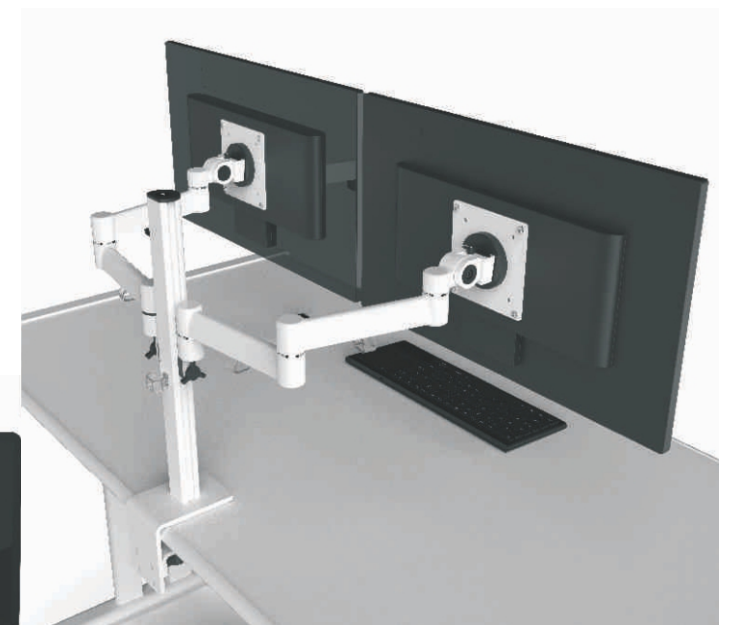
Veida Classic Series Monitor Mounts are thoughtfully designed prioritizing ergonomics, health & wellbeing and productivity improvement as primary objectives.

Features:-

- ✓ Modular design opens up endless possibilities to have Single, Dual, Triple & Quad Screen Setup.
- ✓ This Design allows to retrofit additional Screens, Laptop options, Thin Clients at ease.
- ✓ Quick Release Vesa.
- ✓ Innovative and Integrated cable management system allows neat and cluttered free installation.
- ✓ The smooth and effortless movements allow user to position the screen to the optimum level which reduces greatly neck, eye & back strains.
- ✓ Smooth fingertip screen tilting functions reduces grains to reduce eye fatigue.
- ✓ Veida classic range monitor arms are designed assembled and packed in such a way that it takes minimum amount of time and a single tool (supplied with the product) to install.
- ✓ Clamping options - It comes with edge desk clamp and the desk grommet mounting solutions.
- ✓ Available in White, Silver & Black Colour.



Single Screen



Dual Screen



Laptop Solution

Specifications:-

- ✓ Monitor Weight Range - Upto 10 Kgs.
- ✓ Max Reach - 540 mm
- ✓ Max Height - 505 mm
- ✓ Vesa Rotation - 360°
- ✓ Vesa Tilt - +100° / -70°
- ✓ Vesa Complaint - 75 x 75 & 100 x 100